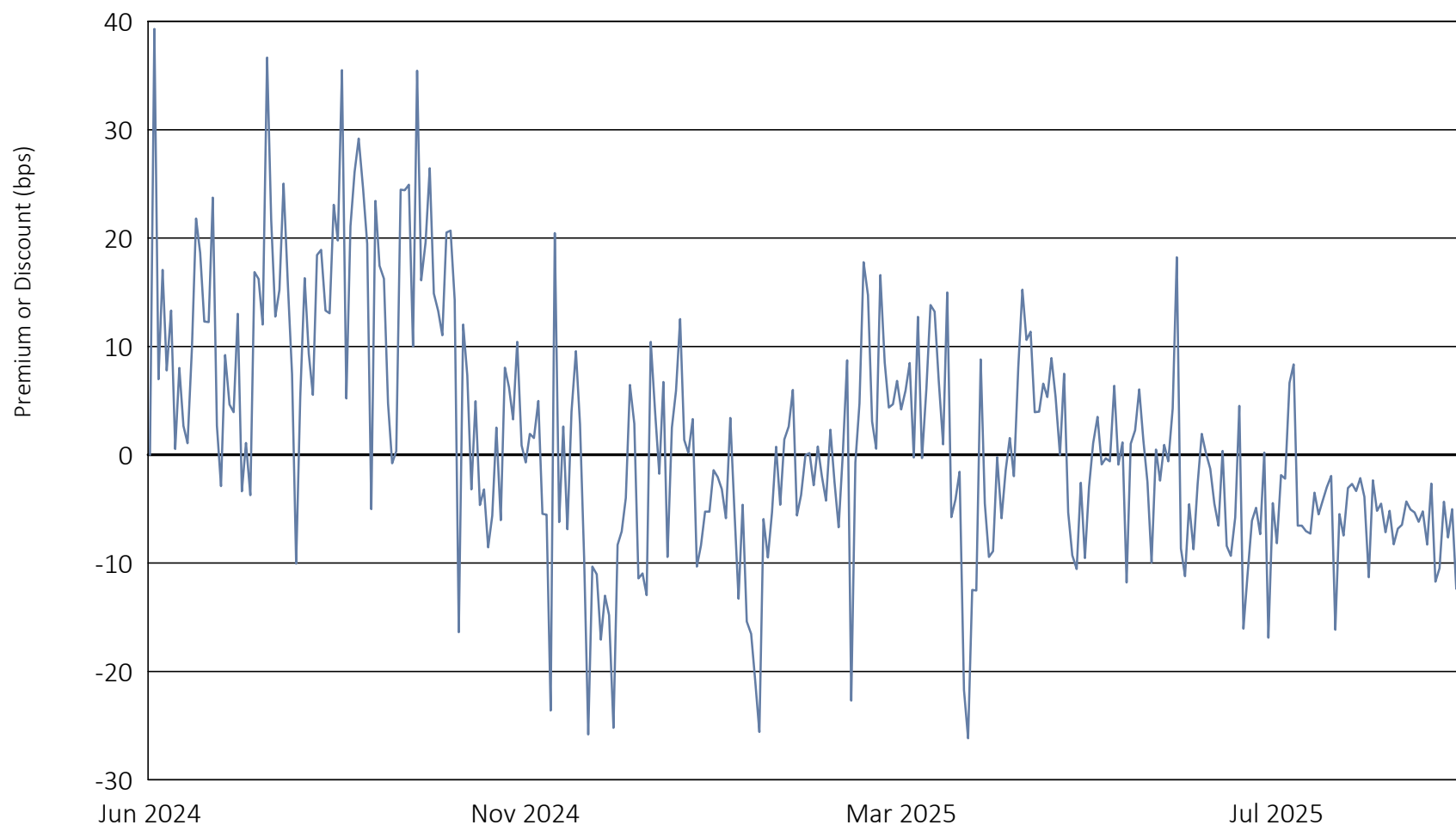


# Innovator Equity Defined Protection ETF - 2 Yr to July 2026

June 28, 2024 to September 30, 2025



	Calendar Year 2024	Calendar Year 2025 through September 30, 2025
Days traded at premium	93	63
Days traded at net asset value	1	2
Days traded at discount	35	122

The following table and line graph are provided to show the frequency at which the closing price of the Fund was at a premium (above) or discount (below) to the Fund's daily net asset value ("NAV"). The table and line graph represent past performance and cannot be used to predict future results. Shareholders may pay more than NAV when buying Fund shares and receive less than NAV when those shares are sold because shares are bought and sold at current market prices.